

VICTORIA PARK

Film, Photography & Unit Basing

Offering a wide range of inspirational locations for every production.



CONTENTS

1

MASTER MAP

2

WEST SIDE

5

EAST SIDE

8

VEHICLES IN THE PARK & GREEN ROOMS

10

UNIT BASES

13

PREVIOUS CLIENTS

14

GENERAL INFORMATION

86
HECTARES



WEST SIDE

- W1 Southern Drive and Northern Drive (wide tree lined roads)
- W2 Shore Place Field (large quiet field)
- W3 Rose Gardens (lovely rose garden)
- W4 Night Walk (lovely road with period lamp posts)
- W5 The Glade (private and secluded area)
- W6 Sulkin Gardens (lovely flower garden)
- W7 Chinese Pagoda & Ornate Bridges
- W8 West Boating Lake & Pavilion Café
- W9 Regal Boat Hire
- W10 V&A Building (holding area)



- E1 Bandstand
- E2 Burdett Coutts Monument (Victorian drinking fountain)
- E3 East Fishing Lake
- E4 Sport Pitches (tennis, football, cricket, bowls - season dependent)
- E5 Old English Gardens
- E6 Adventure Playground
- E7 Hub Building (holding area)
- E8 Skate Park
- E9 Model Boating Lake
- E10 Athletic Track (including long jump and outdoor gym)

WEST SIDE

2



WEST BOATING LAKE

The lake provides a unique and cinematic backdrop. Features include: Chinese Pagoda, Pavilion Café, Fountain, Sculptures, Benches and Tree Lined Roads.

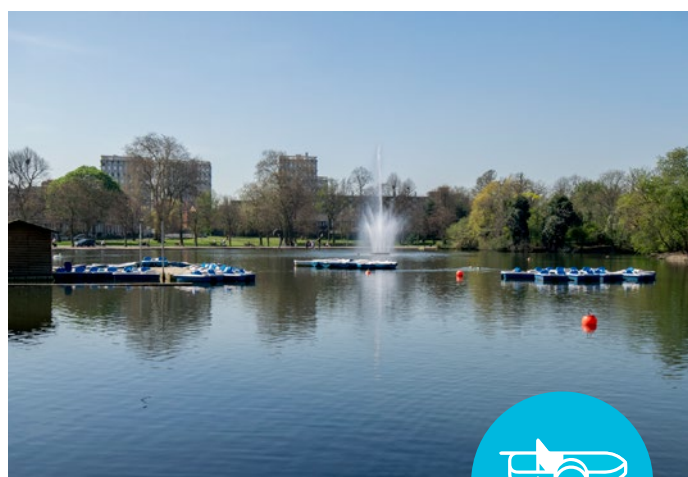
- Fountain runs all year round
- 3-4 ft deep



PAVILION CAFÉ

Permission needed for filming at the café. If filming nearby, please make Café aware out of courtesy.

Contact: 0208 9800030
wearethepavilion.com



REGAL BOAT HIRE

40 boats - pedalos & rowing boats
Operates - Easter to October

Opening times are subject to weather and time of year.

Contact: 07852 127895
info@regalboathire.co.uk





Pagoda



The Glade



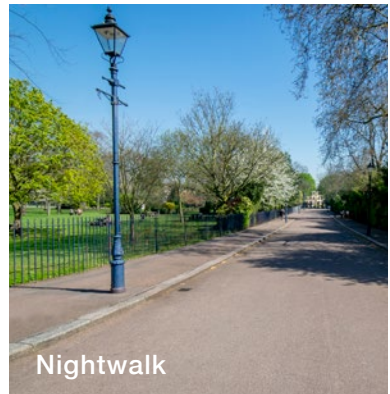
Tree Lined Path



Boating Lake - Regal Boats



Picnic Hut



Nightwalk



Shore Place Field



Northern Drive

**“WE ARE HAPPY
TO HELP ANY
PRODUCTION
WITH ANYTHING
THEY NEED -
IF WE CAN DO
IT WE WILL”**

- Regal Boats



SKATE PARK & ADVENTURE

CONCRETE SKATE PARK KEY FEATURES

- Large bowl
- London's only cradle
- Street section including hips, pump bumps banks and ledges



ADVENTURE PLAYGROUND FEATURES

- Long & High Slides x 3
- Sandpit
- Climbing frames & swings
- Roundabouts, balancing logs and much more
- NB. This is the only playground in the park where filming is possible



PLEASE BE ADVISED

- Monday – Friday shoots only
- Clear by 12:00, start as early as possible
- Crew & equipment kept to a minimum & handheld
- Must work around members of the public – exclusive access is not given
- Clearly displayed 'Filming in Progress' signs
- All crew and security must be in high-vis

SPORT PITCHES & FACILITIES

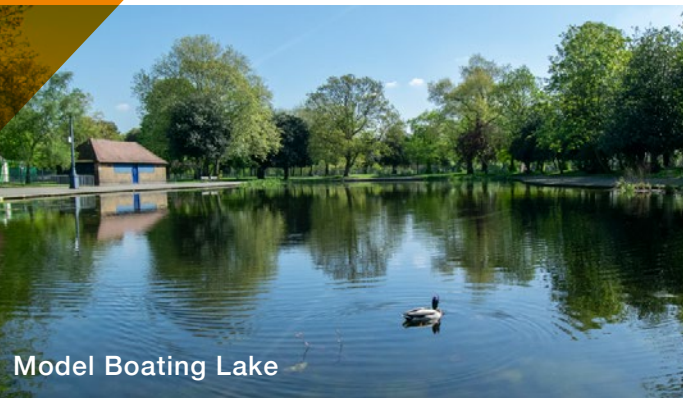
- 5 football winter league pitches
- 2 football summer league pitches
- 3 artificial cricket wickets
- 3 cricket practice nets
- 4 tennis courts
- Bowling green
- Athletics Track (including long jump & outdoor gym apparatus)



**ALL BOOKINGS MUST BE MADE DIRECTLY WITH TOWER
HAMLETS FILM OFFICE – PITCHES CHANGE WITH THE SEASONS!**



East Lake



Model Boating Lake



Burdett Courtts



Tree Lined Path



Old English Gardens



Bandstand



Central Drive



Open Field

**“I LOVE FILMING
IN VICTORIA
PARK AND HAVE
BEEN USING IT
AS A LOCATION
FOR THE LAST
15 YEARS”**

– Simon Scott, Location Manager



VEHICLES IN PARK & HOLDING AREAS

VEHICLES IN PARKS



T&Cs



Vehicles must drive no faster than 5mph



All moving vehicles must have hazard-warning lights on while moving



No vehicles to be driven/parked on the grass at any time



NO petrol generators

FACILITATE FILMING



Maximum of 5 essential technical vehicles on site at any one time



No production cars

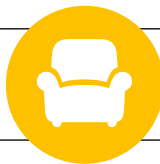
West side access

Gore Gate or Royal Gates West

East side access

Haulage Road or St Mark's Gate Car Park

GREEN ROOMS



THE HUB – EAST SIDE

Features include:

- 93m² large community space
- Café & toilet facilities
- Centrally located in the East Side of the park



VA BUILDING – WEST SIDE

Features include:

- 56m² community space with patio doors
- Small kitchen & toilets
- Chairs and foldaway tables available for use

RATES:

Weekday: £30 + VAT per hour

Weekend: £40 + VAT per hour

Security Deposit: £200
(Fully refundable on completion)

ALL BOOKINGS MUST BE MADE DIRECTLY WITH TOWER HAMLETS FILM OFFICE

**“VICTORIA PARK
WORKS ON SO
MANY LEVELS –
IT HAS A HUGE
VARIETY OF
BACKDROPS AND
FACILITATES
FILMING FOR ALL
SCENARIOS”**

– Ben MacGregor, Location Manager

UNIT BASES

LIDO CAR PARK UNIT BASE

Grove Road, Bow, London, E3 5TB

AREAS

- 1 Lido Car Park
- 2 Haulage Road
- 3 Overflow Area

LIDO CAR PARK

- Lido Car Park
- Facilitates approx. 15 - 20 facilities
- Gated, secure & no time restrictions
- Car Park has 60 bays and is approx. 100m x 20m
- Bookings provide exclusive sole use

**A minimum of
5 working days
notice is required
to suspend
the car parks**



HAULAGE ROAD

- Facilitates approx. 30 – 40 cars only
- Crew Cars only - Single file parking ONLY along NORTH EDGE. Vehicle access must be maintained
- Vehicles are forbidden to park or drive on grass
- The Yellow hatched area in front of the gate must be kept clear at all times as used by contractors/council staff accessing the park daily
- No blocking (covering sensors) or leaving the gate to Haulage Road open at any time
- Access fob provided by Tower Hamlets Film Office

OVERFLOW AREA

- For additional crew car requirements



Costs
 Lido Car Park Only: £1,500 + VAT
 Lido Car Park & Haulage Road: £2,000 + VAT
 Lido Car Park & Haulage Road & Additional Overflow £2,500 + VAT
 Location Admin Fee: £150/£200 + VAT
 Security Deposit: £500



Rubbish
 All rubbish must be completely removed on departure. Tower Hamlets Film Office must agree if collections are being arranged for the following day(s).

Facilitates filming
in Tower Hamlets,
Hackney, Newham,
The City & Beyond!

UNIT BASES

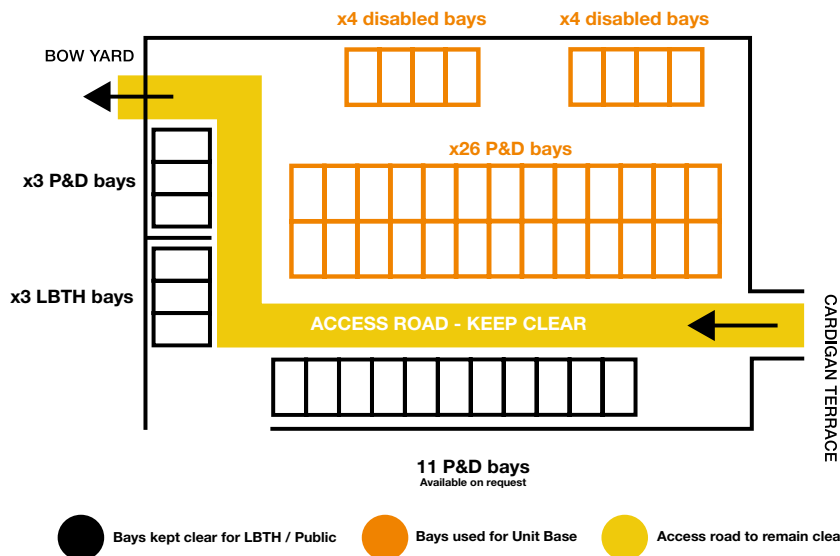
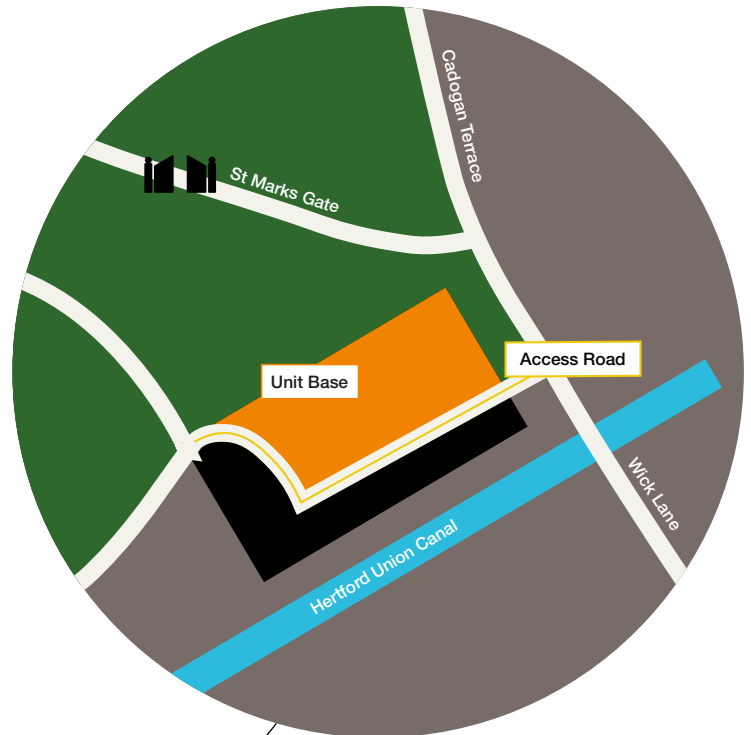
ST MARK'S GATE CAR PARK

Cadogan Terrace, Bow, London, E9 5HP

Access

- Gated & secure
- No vehicle movement between 07:00 – 22:00
- Car Park has x35 car spaces and is approx. 50m x 35m
- Access must be maintained at all times for TH Council / Contractors, Park Rangers, and disabled members of the public

A minimum of 5 working days notice is required to suspend the car parks



Costs

St Mark's Gate Car Park:
£1,500 + VAT
Location Admin Fee:
£150/£200 + VAT
Security Deposit: £500



Rubbish

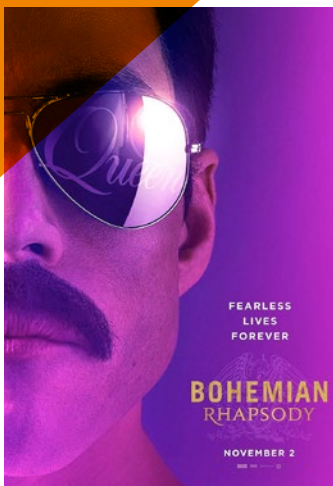
All rubbish must be completely removed on departure. Tower Hamlets Film Office must agree if collections are being arranged for the following day(s).

Facilities filming in Tower Hamlets, Hackney, Newham, The City & Beyond!

**“THE VICTORIA PARK
LIDO CAR PARK
UNIT BASE IS THE
BEST UNIT BASE
OPTION IN EAST
LONDON FOR
THE FILM AND
TV INDUSTRY”**

– Tom Mellish, Location Manager

PREVIOUS CLIENTS



GENERAL INFORMATION

14

Months	Opening Times	Closing Times <small>(Changes weekly. Get in touch for accurate timings in relation to your shoot)</small>
Spring	07:00	20:00 – 21:00
Summer	07:00	20:00 – 19:00
Autumn	07:00	18:00 – 16:00
Winter	07:00	16:00 – 18:00



IMPORTANT INFORMATION

- Productions must be location specific in their enquiries
- Drone filming viable
- 'Filming in progress signs' must be in place for any shoot
- Victoria Park is a public space and productions must be mindful of working around members of the public

HOW TO GET HERE

Victoria Park, Grove Road, Bow, London, E3 5TB

- Nearest tube Mile End (0.7 miles / 15 min walk)
- Nearest stations Cambridge Heath (0.4 miles / 8 min walk) / Hackney Wick (0.5 miles / 9 min walk)
- Buses include 277, 425

CONTACT US

- 0207 2471244
- towerhamlets@filloffice.co.uk
- @thefilloffice
- @thefillofficeltd
- www.facebook.com/filloffice

CLICK HERE
TO MAKE
AN ENQUIRY

CLICK HERE
FOR FULL
BREAKDOWN
OF FEES &
CHARGES