

# colour factory

VENUE PACK  
2022/23





## CAPACITY

INDOOR & YARD  
900

GARDEN  
245

TOTAL  
COMBINED  
CAPACITY  
1,150

WE ARE A LIVE MUSIC VENUE AND MULTI-FUNCTIONAL EVENTS SPACE AND FOOD COURT.

WE ADVOCATE CULTURAL DIVERSITY OFFERING AN ALL IN-CLUSIVE ENVIRONMENT IN WHICH EVERYBODY IS WELCOME.

OUR MUSIC AND EVENT PROGRAMMING IS CENTRED AROUND PROVIDING A SAFE SPACE WHERE INCLUSIVITY AND FREEDOM OF EXPRESSION IS PARAMOUNT.





# LIGHTING – MAIN SPACE

## LIGHTING DESK

Avolites Tiger Touch II

x8 Chauvet R1X  
x8 Alu Hex Pars 64  
x1 Martin Atomic 3000 Strobe  
X2 Clay Paky Stormy CC  
x2 Sunstrips  
x5 Skypan Light  
X1 Martin JEM RZ45

## EXTERNAL LIGHTING

May be brought in on request.

Central truss is on an electric winch  
(Maximum 250kg).  
16amp and 13amp power available.

## PROJECTORS

2 x Epson EB-2065 XGA 3LCD 5500 Lumens Projector



# TECH SPEC – MAIN SPACE

STAGE SIZE IS MODULAR  
DEFAULT SIZE: 3.6 x 7.2m

## DJ KIT

2 x Pioneer CDJ3000  
2 x Technics 1210 mk7  
1 x Mixer DJM 900NXS2

## STAGE MONITORING

2 x Ev Zlx 12p

## SOUND DESK FOH

Allen & Heath SQ5  
(32 inputs on stage)  
(14 outputs on stage)

## AMPLIFIERS

3 x Danley DNA 20K pro Amps

## SOUND SYSTEM

4 x Danley SH69HT tops  
4 x Danley DBH218 subs

## MONITORS

2 x Danley SH75

## MICROPHONES

3 x SM58  
2 x SM57  
3 x Guitar Mics

## DRUM MICS

AKG 7 Pieces  
2 x P17  
4 x P4  
1 x P2

6 x Mono DI's

## STANDS

X 5 Tall Booms  
X 2 Small Booms  
X 2 Keyboard Stands



# TECH SPEC – MEZZANINE

## DJ KIT

2 x Pioneer cdj 2000 nxs2  
1 x Mixer DJM 900 nxs2  
2 x Technics 1210 mk2

## BOOTH MONITORING

RCF art 315-a active x 2

## AMPLIFIERS

Qsc cx1102 x2

## SOUND SYSTEM

x2 Martin Audio S218 Subs  
x2 Martin Audio W3P Tops



# TECH SPEC – GARDEN

## DJ KIT

2 x Pioneer CDJ2000  
1 x Mixer DJM 900

## BOOTH MONITORING

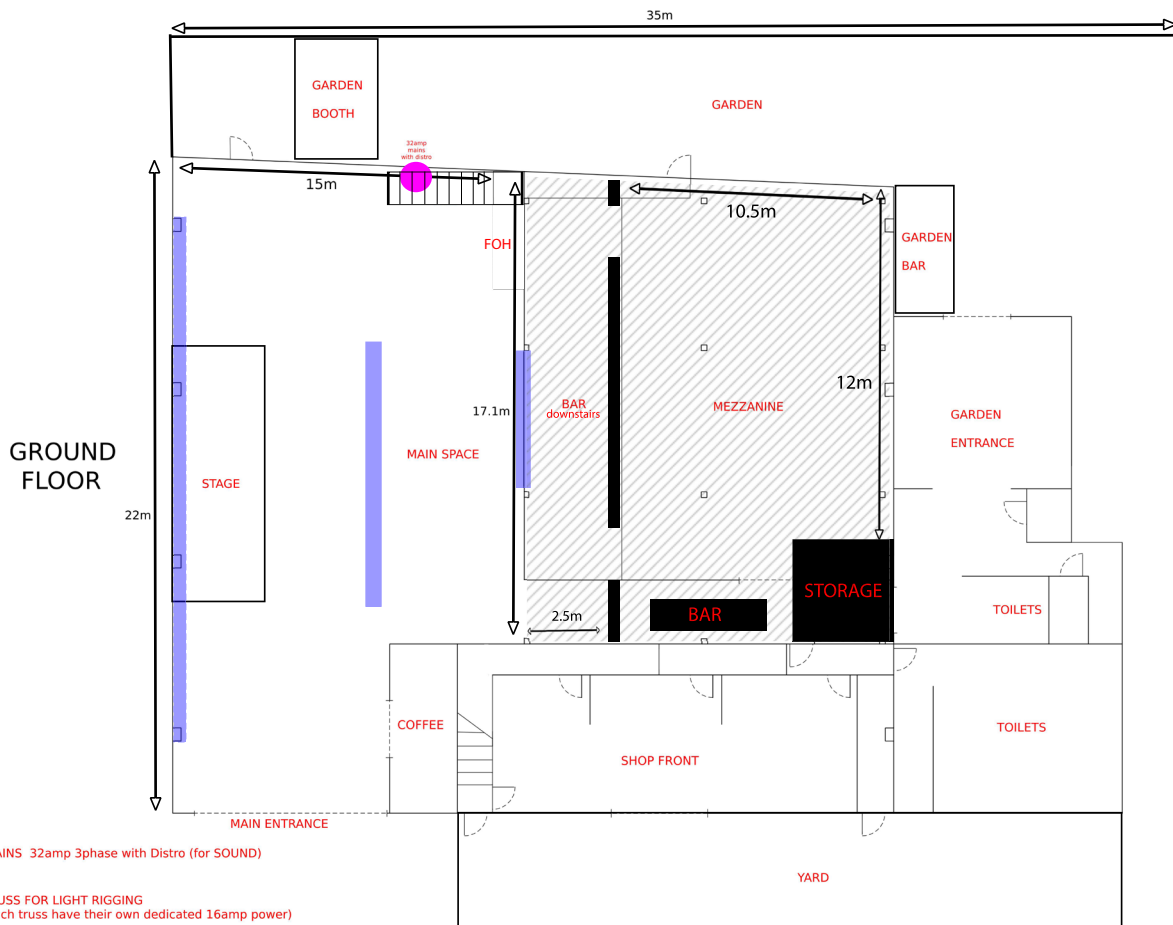
RCF art 315-a active x 2

## SOUND SYSTEM

x8 Martin Audio CDD6TX-WR  
x1 Martin Audio SX210 Sub



# FLOOR PLAN



# FACILITY DETAILS

## WIFI

We have full wifi across the venue. 100 Mb Dedicated Fibre Internet Service. For anything outside of casual usage we recomened a technician is consulted.

## POWER

We have standard across the venue, for anything outside standard use please contact the production manager prior to event. 16, 32 single & 3-phase available only prior request.

## TOILETS

The toilets will be cleaned fully before your event and stocked with supplies.

## TOWELS & STAGE AD-ONS

Promoter to supply

## LOAD IN

Load in 2h prior event start.

If you require access before please contact us in advance to arrange this. This may incur an extra charge

# ACCESS

## FACILITIES

Colour Factory has level access across the venue. Upon arrival a member of staff will be able to show you level access routes.

## ACCESSIBLE TOILETS

Colour Factory has one accessible toilet, this toilet is located in our main gender neutral toilets.

We want to be as inclusive and accessible as possible. If have a question that isn't answered here, or you have any feedback please email us at [info@colourfactory.com](mailto:info@colourfactory.com) and we'll be more than happy to help.



# KITCHENS

## OUR KITCHEN PARTNERS



CHICKENISH



BURGER & CHOP



PITTA GORAS



HOGLESS ROAST