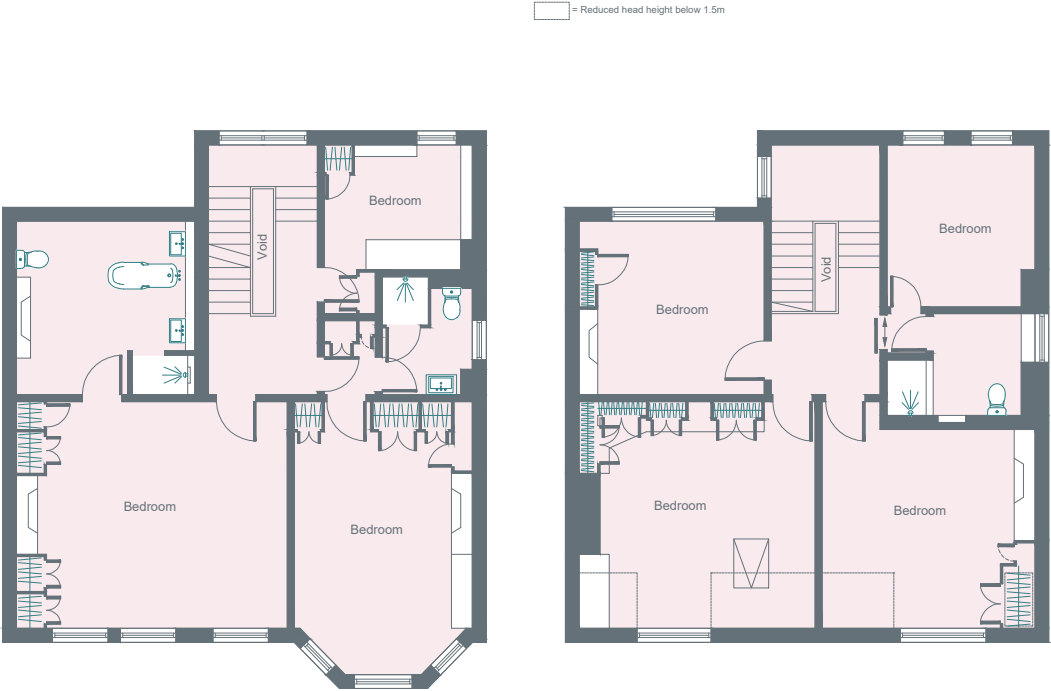


Basement

Ground Floor



First Floor

Second Floor

Approximate Area = 327.9 sq m / 3529 sq ft  
 Shed = 6.7 sq m / 72 sq ft  
 Basement = 27.6 sq m / 297 sq ft  
 Total = 362.2 sq m / 3898 sq ft  
 Including Limited Use Area (6.2 sq m / 67 sq ft)

Surveyed and drawn in accordance with the International Property Measurement Standards (IPMS 2: Residential)  
 fourwalls-group.com 853163

