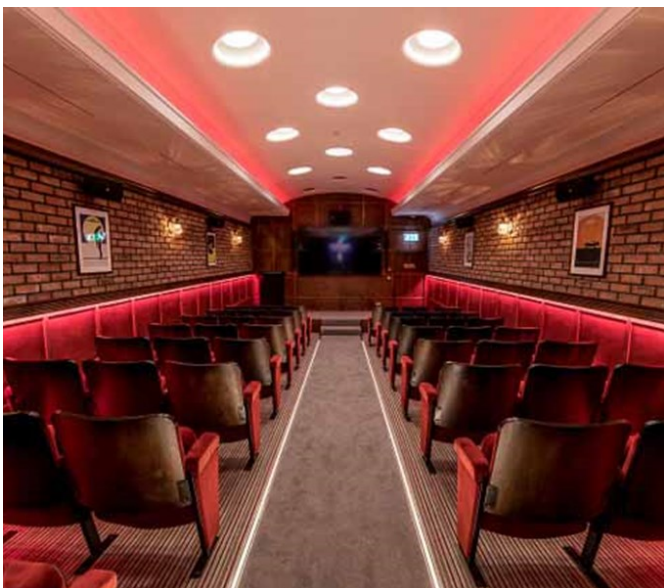


City Brewery Event Space

City of London | Ref 32778



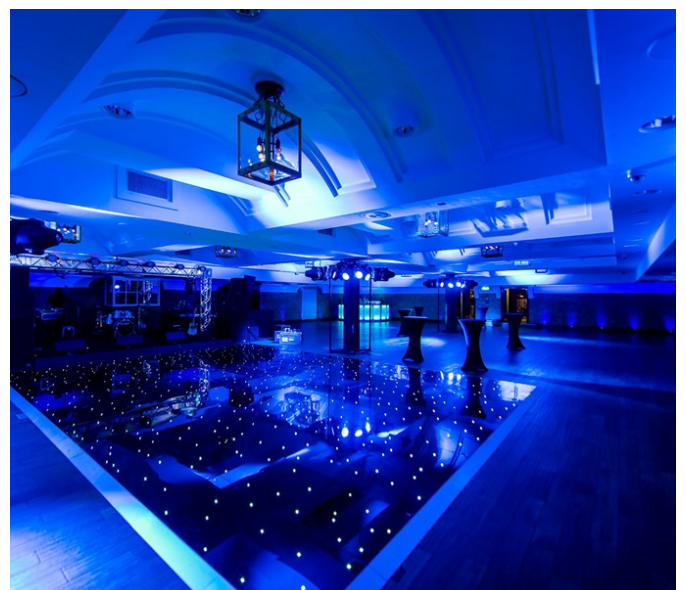
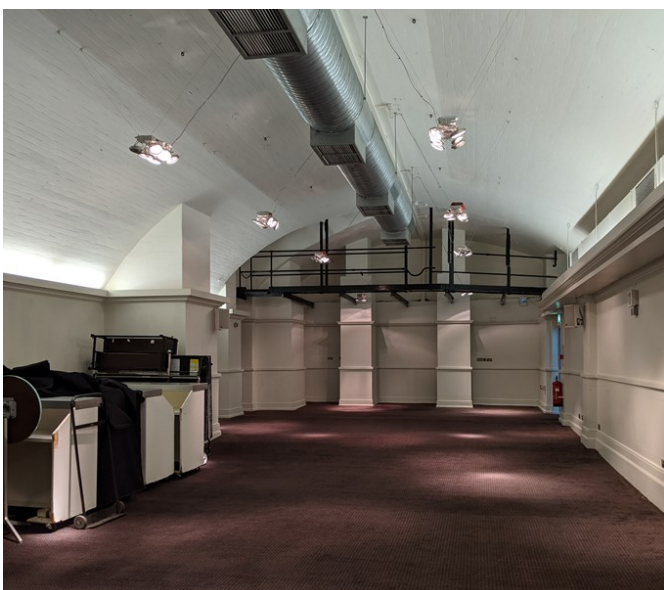
City Brewery Event Space

City of London | Ref 32778



City Brewery Event Space

City of London | Ref 32778



City Brewery Event Space

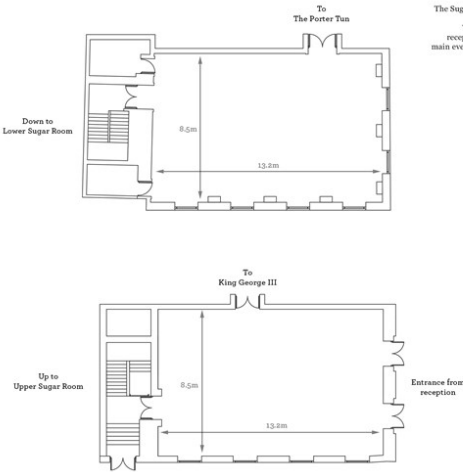
City of London | Ref 32778



The Sugar

DIM

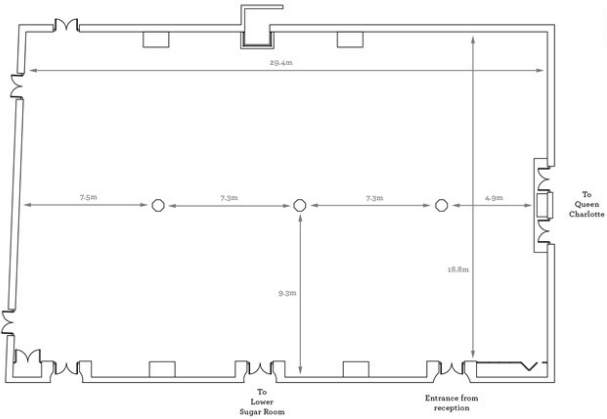
The Sugar Rooms are two distinct spaces connected by their own reception or catering area will main event space. For larger events be used as separate



King Ge

DIM

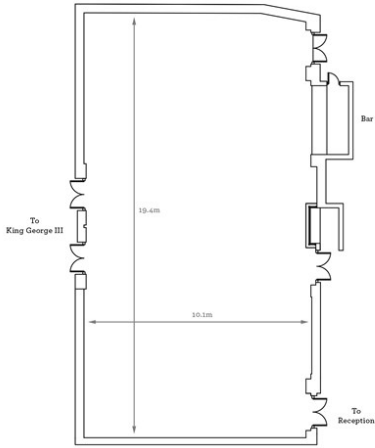
The King George III features a barrel vaulted ceiling. It is perfect for conferences, dinners and exhibits used as the catering or reception events



Queen Cl

DIM

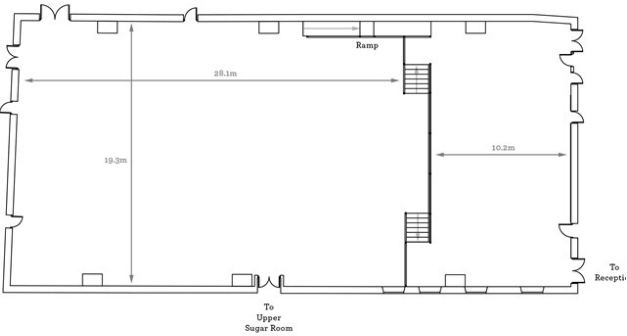
The Queen Charlotte has a bar and exposed brickwork. It also has a bar that's hidden behind a



The Por

DIM

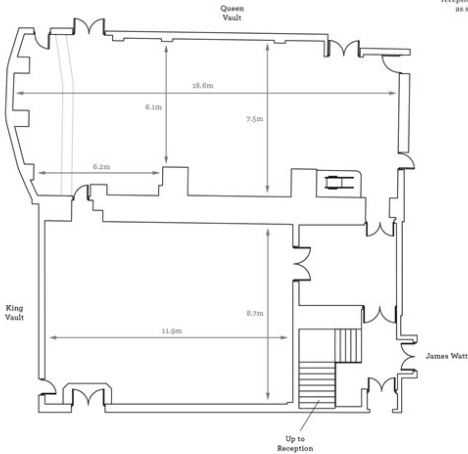
The Porter Tun is one of the most beautiful event spaces in Le King Post timber roof giving a clear, a 778 square metre antique wooden perfect location for conference fashion show



The Smeator

DIM

The Smeaton Vaults are distinctive spaces with ceilings, copper pipes around the walls as walkway. The rooms are connected reception area and can be used as syndicate spaces for

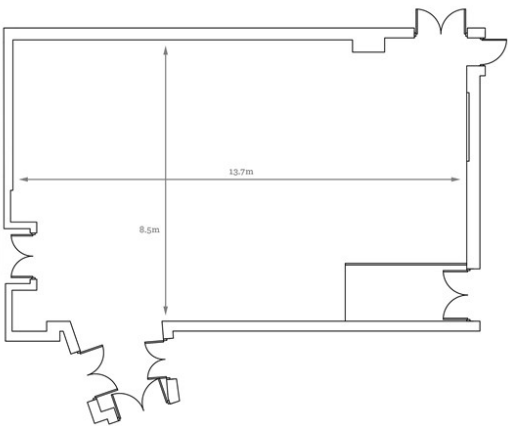


Jam

DIM

In 1785 the team of pump h
by a James Watt steam eng
and this room is su

M
N
1

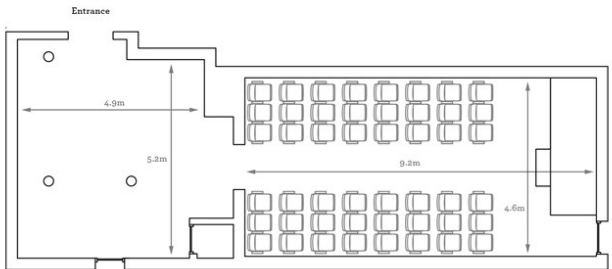


The Cuttin

DIM

The Cutting Room is a
screening space that can a
48 people with state-of the
9

?

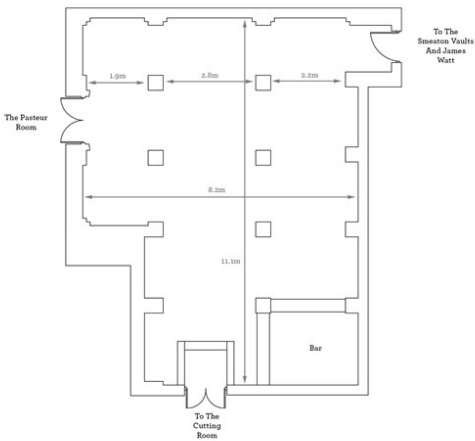


The Sampl

DIM

The Sample Room is the bar and
for the Grubstreet Author. It benefi
comfortable seating an

M
1
F



The Pasteu

DIM

The Pasteur Room is adjac
Room, benefits from extensive
and is suitable for a

?

